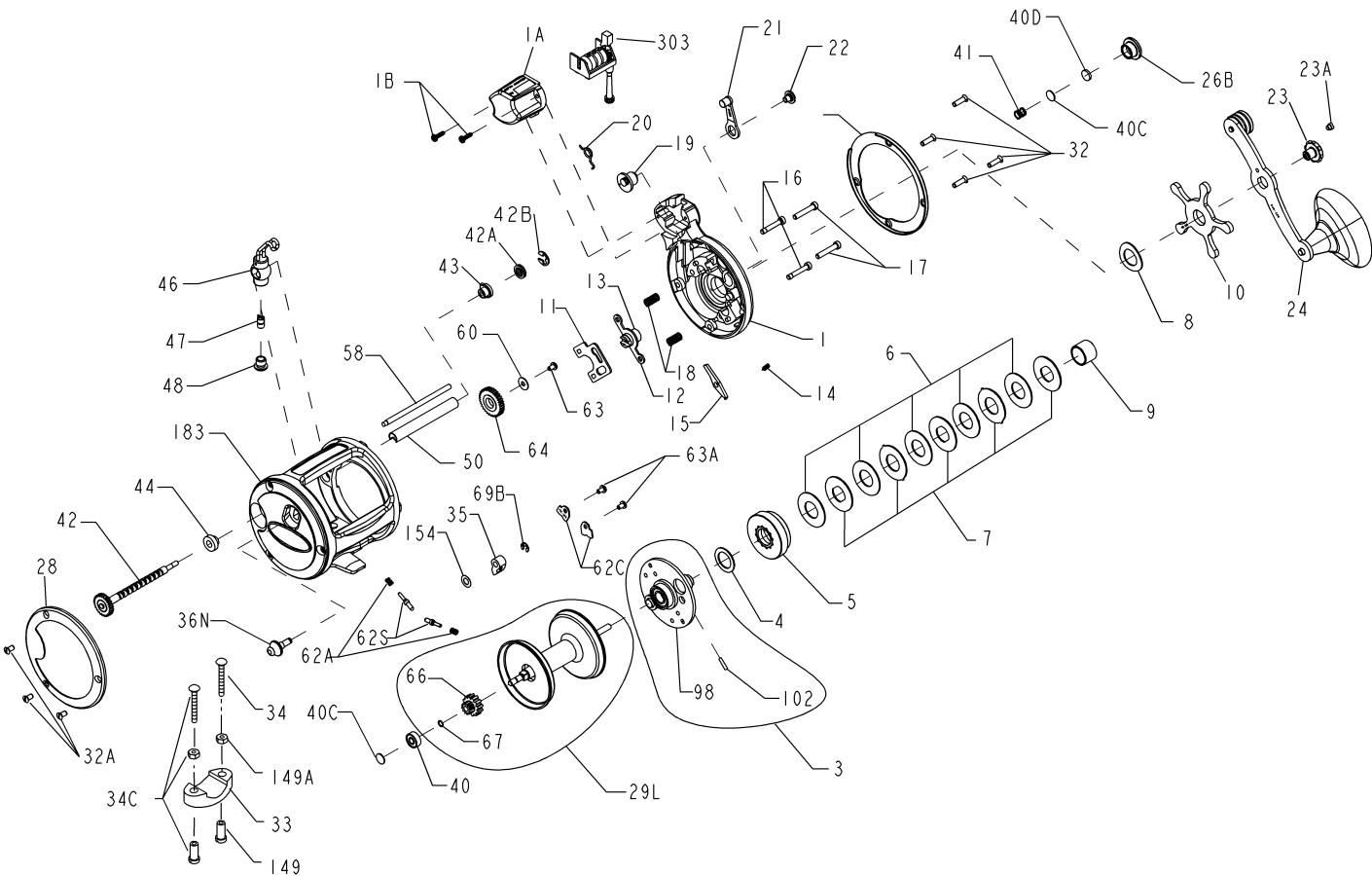


PENN[®] PARTS LIST FOR MODEL 320GT2LC

REEL ASSEMBLY NO. 1152020



KEY NO.	PENN STYLE NO.	ORDER PART NO.	DESCRIPTION
1	001 320GT2LC	1195499	Right Side Plate
1A	001A310GT2LC	1195500	Line Counter Cover
1B	046 430G	1191902	Screw, L.C. cover (2 req.)
2	002 320GT2LC	1195502	Right Side Ring
3	003 320	1180726	Bridge assembly
4	004 349	1180775	Fiber Washer
5	005N320	1180897	Main Gear
6	006 320	1180918	Friction Drag Washer (5 req)

KEY NO.	PENN STYLE NO.	ORDER PART NO.	DESCRIPTION
7	007C970	1181054	Metal Drag Washer (Set of 5)
8	008 349	1181077	Tension Spring
9	009 320	1181158	Spacing Sleeve
10	010 349	1181197	Star Drag
11	011 320	1181242	Eccentric Jack
12	012 155	1181264	Pinion Yoke
13	013N320	1181380	Pinion Gear
14	014 330	1181402	Dog Spring
15	015 320	1181459	Dog
16	016 113H	1181570	Lower Bridge Screw (2 req.)
17	017 113H	1181595	Upper Bridge Screw (2 req.)
18	018 060	1181615	Clutch Spring (2 req.)
19	019 320	1181683	Eccentric Cam
20	020 113H2	1288917	Eccentric Spring
21	021 285	1181860	Eccentric Lever Assembly
22	022 060CH	1181908	Eccentric Screw
23	023 114	1181945	Handle Assembly Screw
23A	110 060	1184437	Handle Lock Screw
24	024S320	1191343	Handle Assembly
26B	026B320	1182137	Spool Tension Control Cap
28	028 320GT2	1182383	Left Side Ring
29L	029L320	1182536	Spool Assembly
32	032 017	1182710	Side Plate Screw (4 req.)
32A	110 050	1184436	Frame Screw (3 req.)
33	033 113	1182754	Rod Clamp
*	*033R200	*1182783	*Ringed Rod Clamp (Optional)
34	034 045	1182788	Clamp Screw Only
34C	034C045	1182862	Clamp Screw w/Nuts
35	035 310N	1182922	Click Tongue
36N	036N320LD	1183049	Click Button
36B	036 700	1183014	Worm Shaft Nut
40	040 320	1183280	Ball Bearing
40C	040C320	1183310	Metal Thrust Washer (2 req.)
40D	040D320	1183317	Rubber Thrust Washer
41	041 330	1183336	Right Side Thrust Spring
42	042 320GT2LC	1195504	Worm
42A	042A320GT2LC	1195506	Gear, L.C. Drive
42B	042B310GT2LC	1195507	Retaining Ring, L.C. Drive
43	043 330	1183384	Right Side Worm Bushing
44	044 330	1183446	Left Side Worm Bushing
46	046 320N	1183562	Line Guide Carriage
7	047 975	1183677	Pawl
48	048 330N	1183704	Pawl Cover Screw
50	050T320	1191972	Worm Shield
58	058 320	1183954	Line Guide Post
60	060 320	1183991	Idler Gear Washer
60A	060 320	1183991	Idler Gear Washer
62A	062A310	1184033	Click Spring (2 req.)
62C	062C321LH	1184041	Click Spring Cover (2 req.)
62S	062S310	1192075	Click Pin (2 req.)
63	063 500S	1184052	Idler Gear Screw
63A	063 500S	1184052	Click Spring Screw (2 req.)
64	064 320	1184066	Idler Gear
66	066 320	1184093	Spool Gear Click Ratchet
67	067 009	1184102	Spool Gear Lock Ring
69B	069B600	1184129	Retaining Ring (Click Button)
98	098 320	1184349	Gear Sleeve
102	102 113	1192230	Gear Sleeve Pin
149	149 045	1184702	Clamp Nut Only
149A	149 200	1184706	Hex Nut Only
154	154 117	1184721	Click Button Washer
183	183 320GT2LC	1195509	Frame
303	303 320GT2LC	1195511	Counter Wheel Assembly

* Not Shown