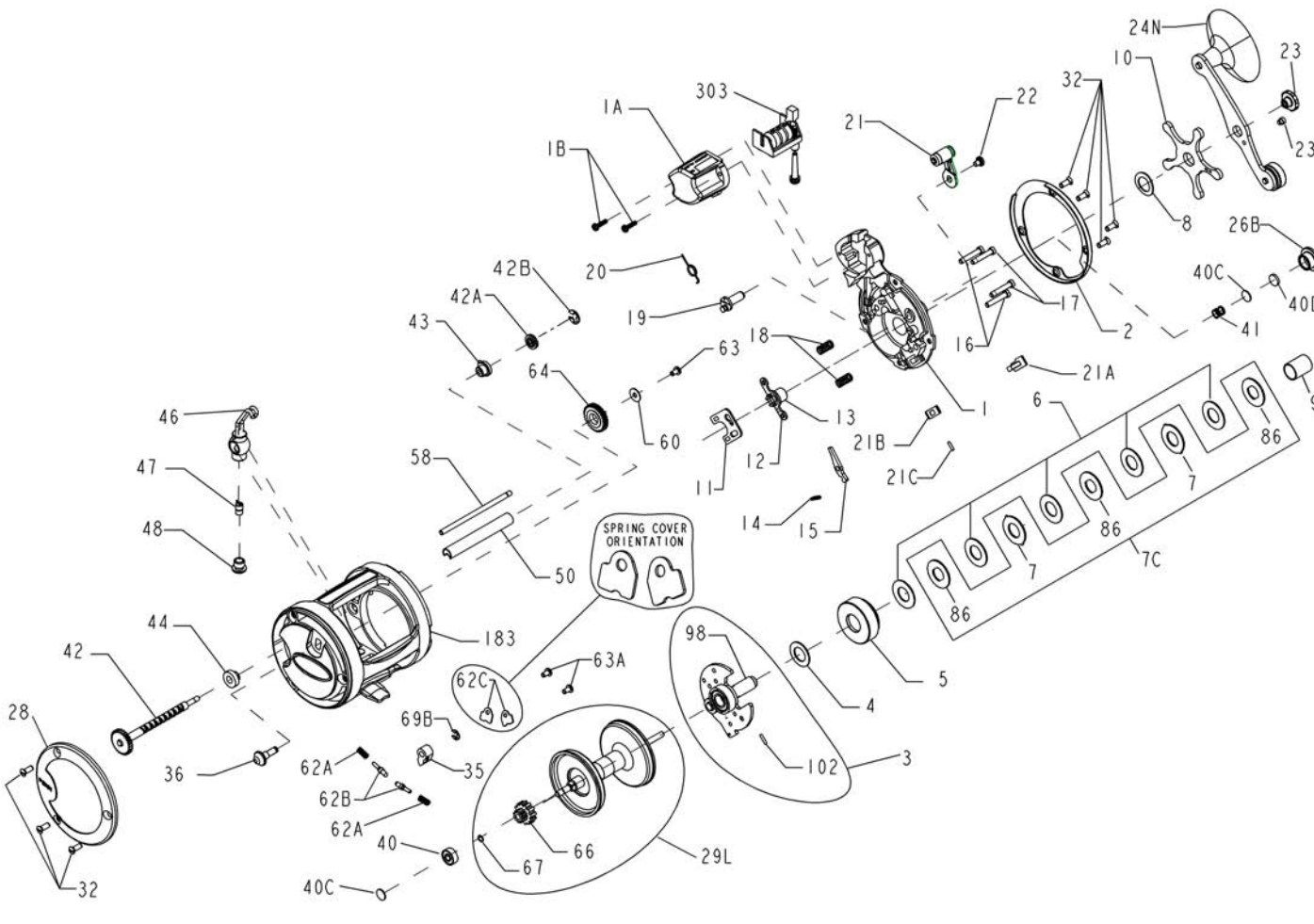




# PARTS LIST FOR MODEL 310GT2LC



<u>KEY NO.</u>	<u>PART NO.</u>	<u>ORIGINAL PENN NO.</u>	<u>DESCRIPTION</u>
3	1180744	003B310	Bridge Assembly
4	1180772	004 155	Fiber Washer
5	1180866	005 310	Main Gear
6	1180906	006 060	Friction Drag Washer (5 req)
7	1181007	007 060	Drag Washer, Eared (2 req)
7C	1181048	007C310	Drag Washer Set
8	1195513	008 310GT2	Tension Spring
9	1181157	009 310	Spacing Sleeve
10	1181200	010 505	Star Drag
11	1181241	011 310	Eccentric Jack
12	1181256	012 009	Pinion Yoke
13	1181343	013 310	Pinion Gear
14	1181386	014 010	Dog Spring
15	1181458	015 310	Dog
16	1181576	016 310	Lower Bridge Screw (2 req)
17	1181598	017 310	Upper Bridge Screw (2 req)
18	1181607	018 009	Clutch Spring (2 req)
19	1195514	019 310GT2	Eccentric Cam
20	1181764	020 109	Eccentric Spring
21	1192654	021S310	Eccentric Lever
21A	1181890	021A310	Direct Drive Button
21B	1181902	021B310	Direct Drive Button Spring
21C	1181905	021C310	Direct Drive Button Pin
22	1195515	022 310GT2	Eccentric Screw
23	1181935	023 060	Handle Assembly Screw
23A	1184437	110 060	Handle Lock Screw
24N	1195516	024N310	Handle Assembly
26B	1182137	026B320	Spool Tension Control Cap
28	1195517	028 310GT2	Left Side Ring
29L	1195518	029L310GT2	Aluminum Spool
32	1195519	032 310GT2	Side Plate Screw (7 req)
35	1195520	035 310GT2	Click Tongue
36	1183000	036 310	Click Button
40	1183280	040 320	Ball Bearing
40C	1183310	040C320	Metal Thrust Washer (2 req)
40D	1183317	040D320	Rubber Thrust Washer
41	1183336	041 330	Right Side Thrust Spring
42	1195503	042 310GT2LC	Worm
42A	1195505	042A310GT2LC	Gear, L.C. Drive
42B	1195507	042B310GT2LC	Retaining Ring, L.C. Drive
43	1183384	043 330	Right Side Worm Bearing
44	1183446	044 330	Left Side Worm Bearing
46	1183560	046 310	Line Guide Carriage
47	1183677	047 975	Pawl
48	1183704	048 330N	Pawl Cover Screw
50	1191971	050T310	Worm Shield
58	1183952	058 310	Line Guide Post
60	1183991	060 320	Idler Gear Washer
62A	1184033	062A310	Click Spring (2 req)
62B	1195521	062S310GT2	Click Pin (2 req)
62C	1184041	062C321LH	Click Spring Cover (2 req)
63	1184052	063 500S	Idler Gear Screw
63A	1184052	063 500S	Click Spring Screw (2 req)
64	1195522	064 310GT2	Idler Gear
66	1184092	066 310	Spool Gear Click Ratchet
67	1184102	067 009	Spool Gear Lock Ring
69B	1184129	069B600	Retaining Ring (Click Button)
86	1184252	086 060	Drag Washer, Keyed (3 req)
98	1184348	098 310	Gear Sleeve
102	1184408	102 060	Sleeve Pin
183	1195508	183 310GT2LC	Frame
303	1195510	303 310GT2LC	Counter Wheel Assembly

<u>KEY NO.</u>	<u>PART NO.</u>	<u>ORIGINAL PENN NO.</u>	<u>DESCRIPTION</u>
1	1195488	001 310GT2LC	Right Side Plate
1A	1195500	001A310GT2LC	Line Counter Cover
1B	1191902	046 430G	Screw, Counter Cover (2 req)
2	1195501	002 310GT2LC	Right Side Ring