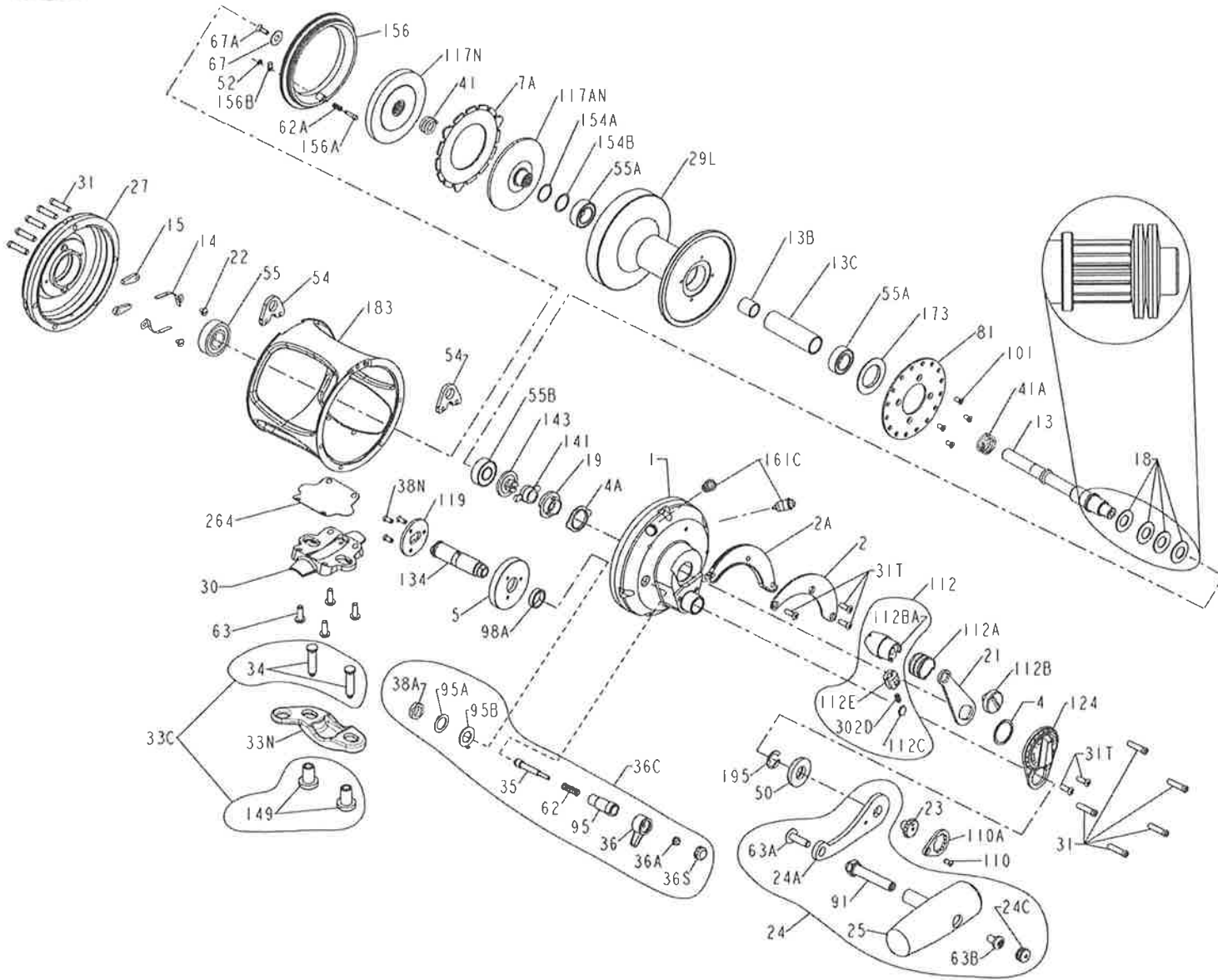




PARTS LIST FOR MODELS 30VW, 1151044 (GOLD) & 30VWS, 1385482 (SILVER)



KEY NO.	DESCRIPTION	PART NO.
19	19-30VS Drag Cam	1181643
21	21-30VS Drag Lever	1181828
22	22-109 Dog Spring Screw (2 req)	1181912
23	23-114 Handle Screw Assembly	1181945
24	24-30TW Handle Assembly	1181970
24A	24-30TW-1 Handle Blank	1206000
24C	24C-50M Handle Knob Cap	1191334
25	25S-50M Knob Assembly	1206009
27	27-30VS Left Side Plate Asm (GOLD)	1182159
27	27-30VSSLV LS Plate Asm (SILVER)	1390195
29L	29L-30VSW Spool Asm (GOLD)	1182487
29L	29L-30VSWSLV Spool Asm (SILVER)	1389488
30	30-30VS Stand	1191551
31	31-80VS Side Plate Screw (10 req)	1191554
31T	31T-70 Short Screw (5 req)	1182700
33C	33C-70VS Screw & Nut Kit	1182770
33N	33N-70 Rod Clamp	1191619
34	34-70 Clamp Screw (2 req)	1182792
35	35-70 Click Tongue	1182902
36	36N-50 Click Lever	1183047
36A	36-700 Click Lever Nut	1183014
36C	36C-30VSW Click Assembly Kit	1191712
36S	36S-80ST Click Lever Cap	1183051
38A	38-710 Click Bushing Nut	1183157
38N	38N-7 Main Gear Screw (3 req)	1183171
41	41-25FR Drag Plate Spring	1183332
41A	41-70 Pinion Spring	1183328
50	50-30VW Gear Stud Shield	1191965
52	52-910 Drag Cover Lock E-Ring	1183840
54	54-30T Harness Lug (2 req)	1183852
55	55-80 Left Side Ball Bearing	1183878
55A	55-80ST Spool Bearing (2 req)	1183879
55B	20-704 Right Side Ball Bearing	1181790
62	62-50 Click Spring	1184022
62A	62-545 Drag Cover Lock Spring	1184029
63	63-30T Stand Screw (4 req)	1184045
63A	63A-50 Handle Screw	1184056
63B	63-50 Handle Knob Screw	1184046
67	67-70 Pinion Gear Washer	1184106
67A	67A-70 Pinion Retaining Screw	1184111
81	81-50 Click Ratchet Disk	1184204
91	91S-50 SS Handle Rivet	1206011
95	95-70 Click Bushing	1184307
95A	95A-20 Serrated Click Washer	1184310
95B	95A-50 Tab Click Washer	1184311
98A	98A-30VW Gear Stud Spacer	1192706
101	101-30 Ratchet Disk Screw (4 req)	1184403
110	110-50 Locking Plate Screw	1184436
110A	110A-50 Handle Screw Lock Plate	1184441
112	112-30VS Drag Knob Asm (GOLD)	1184456
112	112-30VSSLV Drag Knob Asm (SILVER)	1390201
112A	112A-30VS Drag Knob Sleeve	1184460
112B	112B-70 Drag Knob Screw (GOLD)	1184464
112B	112B-70SLV Drag Knob Screw (SILVER)	1389498
112BA	112B-30VS Drag Knob (GOLD)	1192711
112BA	112B-30VSSLV Drag Knob (SILVER)	1389497
112C	112C-30VS Drag Click Plate	1192712
112E	112E-30VS Click Plate Housing	1192713
117AN	117AN-50S Inner Drag Plate	1184495
117N	117N-50S Outer Drag Plate	1184507
119	119-50 Main Gear Coupling Plate	1192268
124	124L-30VS Bridge Cover Asm	1184548
134	134-30VW Gear Stud	1192309
141	141-30VS Cam Follower	1184652
143	143-16VS Preset Screw	1184670
149	149-70 Rod Clamp Nut (2 req)	1184703
154A	154-80 Shim- Spool (as required)	1184719
154B	154-80-5 Shim- Spool (as required)	1253919
156	156-30VS Drag Cover	1184736
156A	156A-30VS Drag Cover Lock Pin	1184752
156B	156B-30VS Drag Cover Lock Plate	1184756
161C	161C-30VSW Locating Pin Asm (2 req)	1192369
173	173-50VS Spool Bearing Retainer	1184838
183	183N-30VW Frame Asm (GOLD)	1192738
183	183N-30VWSLV Frame Asm (SILVER)	1390204
195	195-40 Gear Stud Retaining Ring	1184955
264	264-30VS Stand Gasket	1192542
302D	302D-525MAG Drag Click Spring	1185255

KEY NO.	DESCRIPTION	PART NO.
1	1-30VS Plate RS Asm(GOLD)	1180415
1	1-30VSSLV Plate RS Asm(SILVER)	1389472
2	2-30VS Quadrant Ring	1180592
2A	2A-30VS Quadrant Spacer	1180655
4	4-12LT Thrust Washer	1180748
4A	4-30VS Drag Cam Bushing	1180752
5	5-30VW Main Gear	1190952
7A	7A-30VS Metal Drag Washer	1181032

KEY NO.	DESCRIPTION	PART NO.
13	13-30VW Pinion Gear	1191099
13B	13B-70 Pinion Gear Sleeve	1181371
13C	13B-30VSW Spool Sleeve	1181367
14	14-16S Dog Spring (2 req)	1181388
15	15-50 Dog (2 req)	1181425
18	18-30 Disc Clutch Spring (4 req)	1181610